



Kite Konnect®

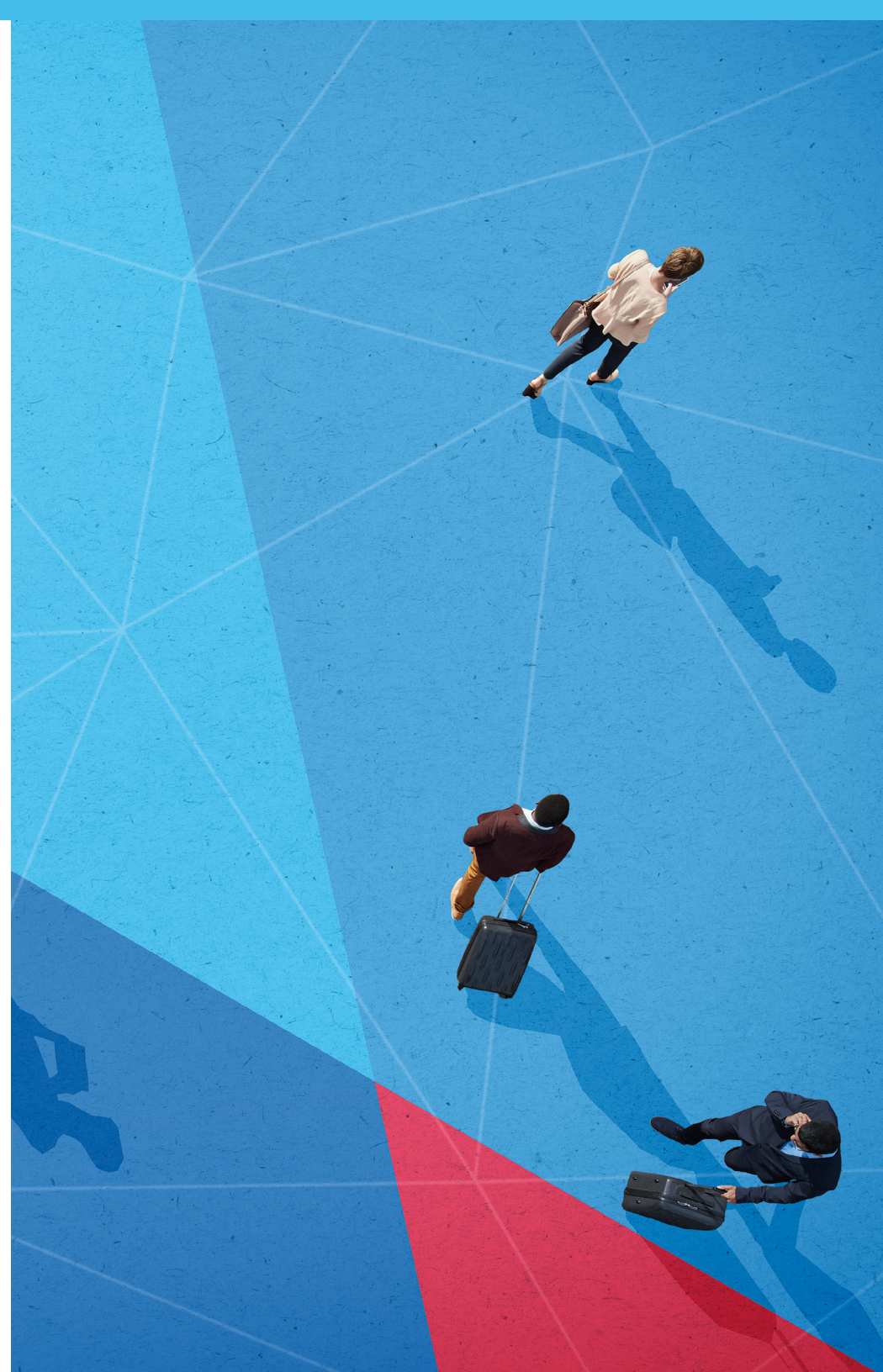
Your Link to Cell Therapy Support

Kite Konnect is committed to supporting healthcare providers and patients throughout each step of treatment with Kite therapy.

Cell therapy patient programs are for eligible prescribed patients.



To learn more about support for patients and healthcare professionals, visit [KiteKonnnect.com](https://www.kitekonnnect.com) or contact a Kite Konnect Team Member at **1-844-454-KITE** [5483], Monday–Friday, 5 AM–6 PM PT.



Kite Konnect®

Support throughout the CAR T treatment journey

Kite Konnect is a Kite-sponsored resource committed to supporting healthcare providers (HCPs) and patients throughout each step of treatment with Kite therapy. Support for eligible individuals may include assistance with Kite Konnect referrals, information on Authorized Treatment Centers (ATCs), reimbursement support, and programs to help cover the cost of Kite therapy.

Cell therapy patient programs are for eligible prescribed patients.

Your link to cell therapy support begins at [KiteKonnect.com](https://www.kitekonnect.com),
1-844-454-KITE [5483],
Monday–Friday, 5 AM–6 PM PT.

REFERRAL RESOURCES for Community Physicians



The Kite Konnect Referral Portal

The Kite Konnect Referral Portal empowers the critical first steps in the CAR T therapy process and provides contact information for the Authorized Treatment Center Care Teams.

Find a Treatment Center & Meet the Care Team

Locate an Authorized Treatment Center and contact the Care Team directly to refer a patient for CAR T therapy.

Understand the Treatment Process

Physicians can view important milestones in the CAR T treatment process while staying connected to their patient until the patient's CAR T therapy is complete.

Submit a Referral Through Kite Konnect

Submit a referral to have Kite Konnect assist a patient with connecting to the CAR T appointment line at an Authorized Treatment Center and view status updates on the patient upon treatment with a CAR T therapy.



TREATMENT SUPPORT for the Care Team



The Kite Konnect Hospital Portal

The Kite Konnect Hospital Portal enables healthcare professionals at Authorized Treatment Centers to enroll patients, schedule Leukapheresis, and track and manage Cell Orders through the homepage dashboard.

Schedule Leukapheresis

View availability for Leukapheresis, schedule, and submit requests to reschedule. A Kite Konnect Case Manager can also provide scheduling assistance.

Check Cell Order Status

See all Kite CAR T patients at the Authorized Treatment Center and their status in their therapy journey. Track Cell Order submissions to provide patients a timeline for conditioning chemotherapy and CAR T-cell infusion. A dedicated Kite Konnect Case Manager is also available to address any needs or requests related to a patient's Cell Order.

Link Patients to Kite Konnect Support

Submit requests for patients that may need additional support and a Kite Konnect Case Manager will contact the patient directly to help. Eligibility requirements may apply.

SUPPORT AND RESOURCES for Patients and Caregivers



Kite Konnect Patient Navigators

Patient Navigators are here to help patients and caregivers feel informed, confident, and supported throughout every step of the CAR T treatment journey.

Welcoming New Patients

Upon enrollment, a Patient Navigator will call to make an introduction and provide any support materials or resources the patient and their caregivers might need.

Reimbursement Support

Reimbursement Specialists are available to start benefits investigations, provide claims appeals information, and share potential sources of support for eligible uninsured and underinsured patients.

Ongoing Support

Patient Navigators help connect patients to Authorized Treatment Centers and ensure patients and caregivers always have access to the information and resources they need.



Dedicated support throughout the treatment journey



Find a Treatment Center

Provide patients and healthcare professionals information on CAR T Authorized Treatment Centers.



Logistics Support

Patients can learn about potential resources for transportation and housing assistance.



Reimbursement Support

Help with benefits investigations, claims appeals information, and potential sources of support for eligible uninsured and underinsured patients.



Patient Enrollment

Register a patient for therapy if you are a healthcare professional.



Ongoing Commitment

Kite Konnect Case Managers are available to support healthcare professionals and patients throughout the CAR T treatment journey.

Authorized Treatment Centers are independent facilities certified to dispense Kite CAR T therapies. Choice of an Authorized Treatment Center is within the sole discretion of the physician and patient. Kite does not endorse any individual treatment sites.

Resources may include referrals to independent third-party nonprofit patient assistance programs. These programs are not operated or controlled by Kite. Nonprofit patient assistance program eligibility requirements may vary and are established solely by each independent organization. Kite makes no guarantee with respect to reimbursement or copay assistance for any item or service.

Cell therapy patient programs are for eligible prescribed patients.

To learn more about support for patients and healthcare professionals, visit [KiteKonnect.com](https://www.kitekonnect.com) or contact a Kite Konnect Team Member at **1-844-454-KITE** [5483], Monday–Friday, 5 AM–6 PM PT.

KITE KONNECT, the Kite Konnect Logo, KITE, and the Kite Logo are registered trademarks of Kite Pharma, Inc. GILEAD is a registered trademark of Gilead Sciences, Inc.

© 2021 Kite Pharma, Inc. | US-KKP-0026 11/2021

